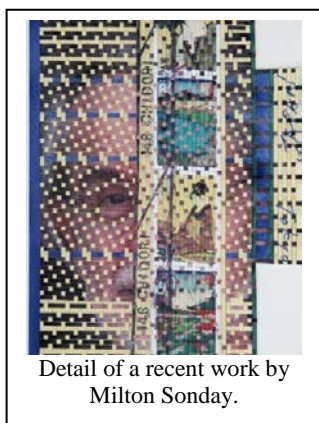


Sonday's 30-year tenure with the Smithsonian's Cooper-Hewitt National Design Museum began in 1968. With his attuned eye and acute understanding of the many ways textiles are made and patterned, he recommended significant additions to the Cooper-Hewitt's comprehensive collection, including international examples of cutting-edge textile technology, such as the work of Japanese textile innovator Junichi Arai, who created advanced fabrics for the likes of Issey Miyake and the Nuno Corporation. His exhibitions with the Cooper-Hewitt included the beautiful *Lace* (1982) and the full-floor show *Color, Light, Surface: Recent Textiles* (1990). *Color, Light, Surface* featured a large collection of commercially and independently produced lengths of fabrics of the 1980s from Europe, the United States and Japan.

"From the analysis of historical velvet and lace, to showcasing the exceptional continuous patterns of Persian textiles through elegant drawings, Milton Sonday has clearly documented the inherent complexity of textiles to scholars and the public alike," said Bruce Baganz, President of The Textile Museum Board of Trustees. In addition to structure analysis, Sonday is renowned for his research into the little-studied field of continuous pattern. Textile Museum Research Associate for Southeast Asian Textiles Mattiebelle Gittinger (and 2009 recipient of the Myers Award) explained, "He has taught nuance in structure and pattern to a generation of textile scholars and graced the field with lucidity and artistry in his textile drawings and diagrams."



Detail of a recent work by Milton Sonday.

Today Sonday divides his time between New York and Pennsylvania, and continues independent research in addition to creating original textile art. In his most recent work he weaves narrow strips of paper to combine two contrasting images—resulting in ikat-like pieces that are as aesthetically pleasing as they are illuminating.

About The Textile Museum

The Textile Museum expands public knowledge and appreciation—locally, nationally, and internationally—of the artistic merit and cultural importance of the world's textiles. Founded in 1925 by George Hewitt Myers, The Textile Museum is an international center for the exhibition, study, collection and preservation of the textile arts. The Textile Museum collection encompasses more than 18,000 objects that date from 3,000 BCE to the present, including some of the world's finest examples of rugs and textiles from the Near East, Central Asia, East and Southeast Asia, Africa, and the indigenous cultures of the Americas. Included in the collection are extraordinary holdings of the Islamic world and pre-Columbian textiles. The museum's 20,000 volume Arthur D. Jenkins Library of Textile Arts is among the world's foremost resources for the study of textiles. The Textile Museum is located at 2320 'S' Street, NW in Washington, D.C. The museum is open Tuesday through Saturday 10 a.m. to 5 p.m. and Sunday 1 p.m. to 5 p.m. An \$8 suggested admission is requested of non-members.

###

For more information or images, please contact Katy Clune at (202) 667-0441, ext. 77, or by e-mail at kclune@textilemuseum.org or visit www.textilemuseum.org/about/pressroom.htm.